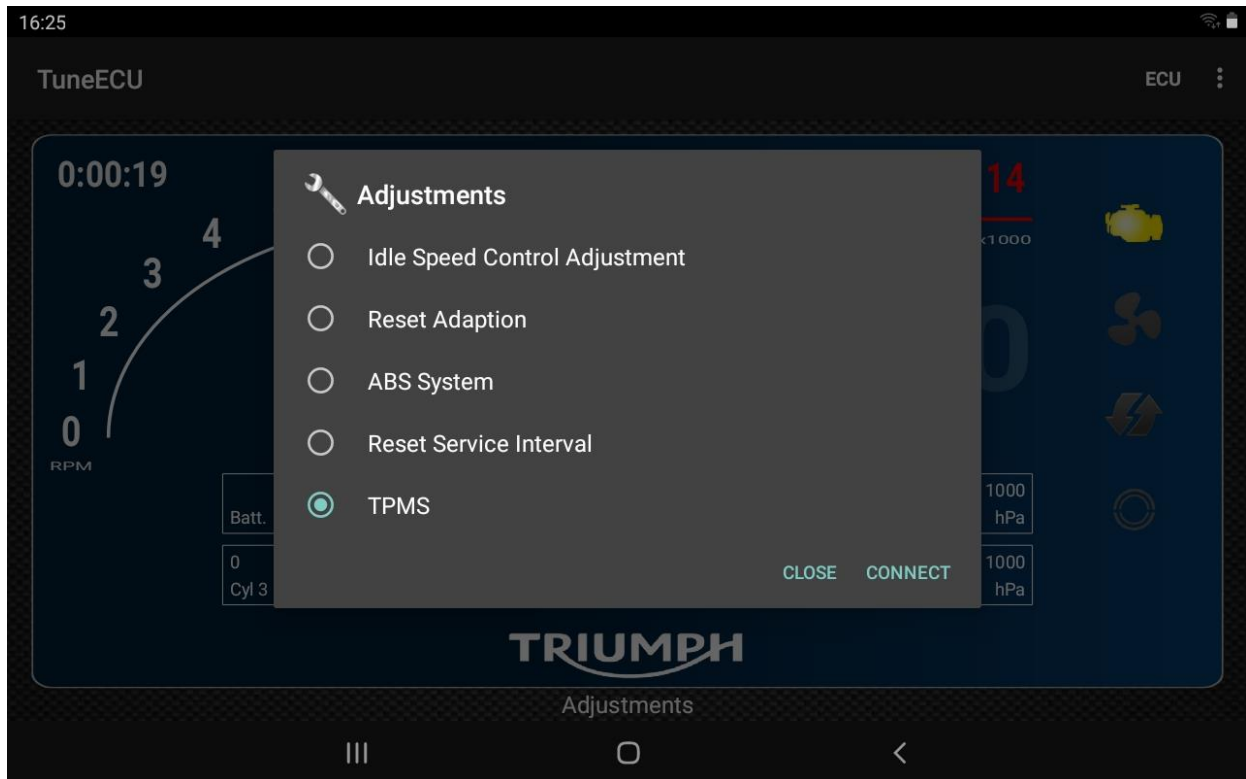
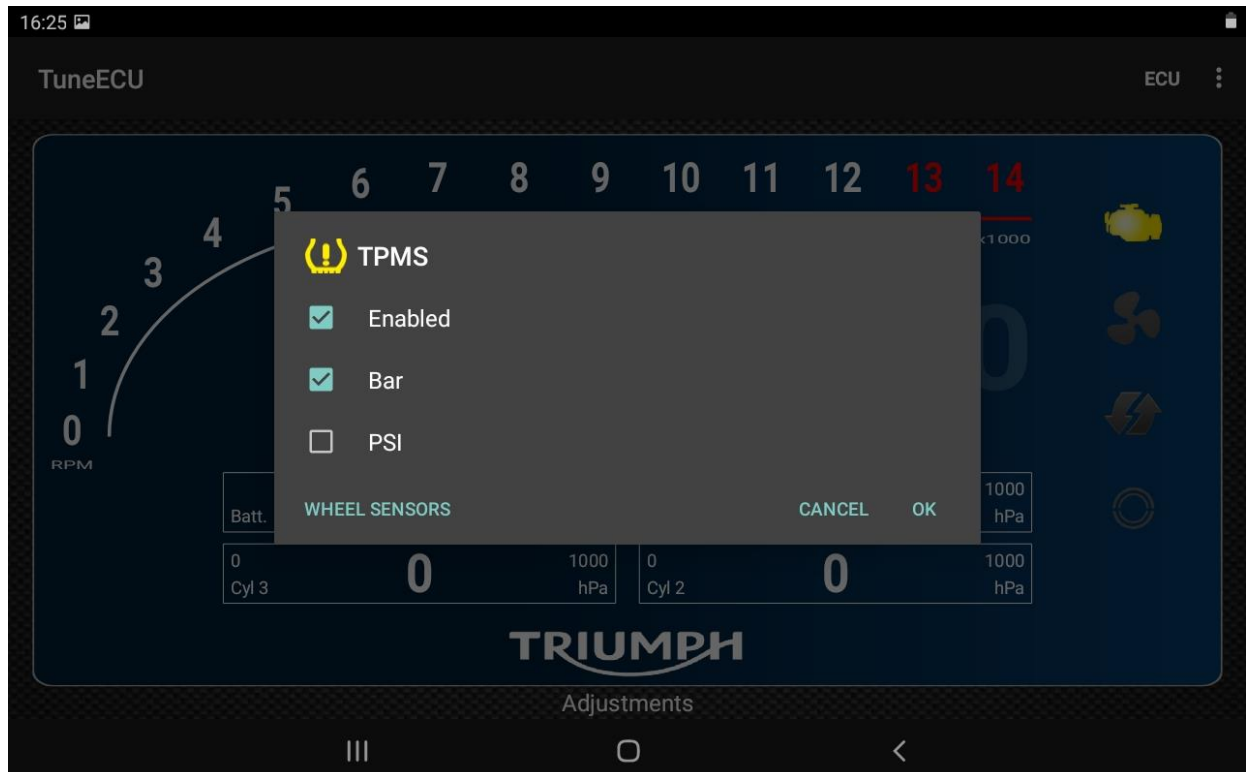


Enable the TPMS with TuneECU

To activate the TPMS feature with TuneECU, go to the Adjustments screen then select TPMS and Connect

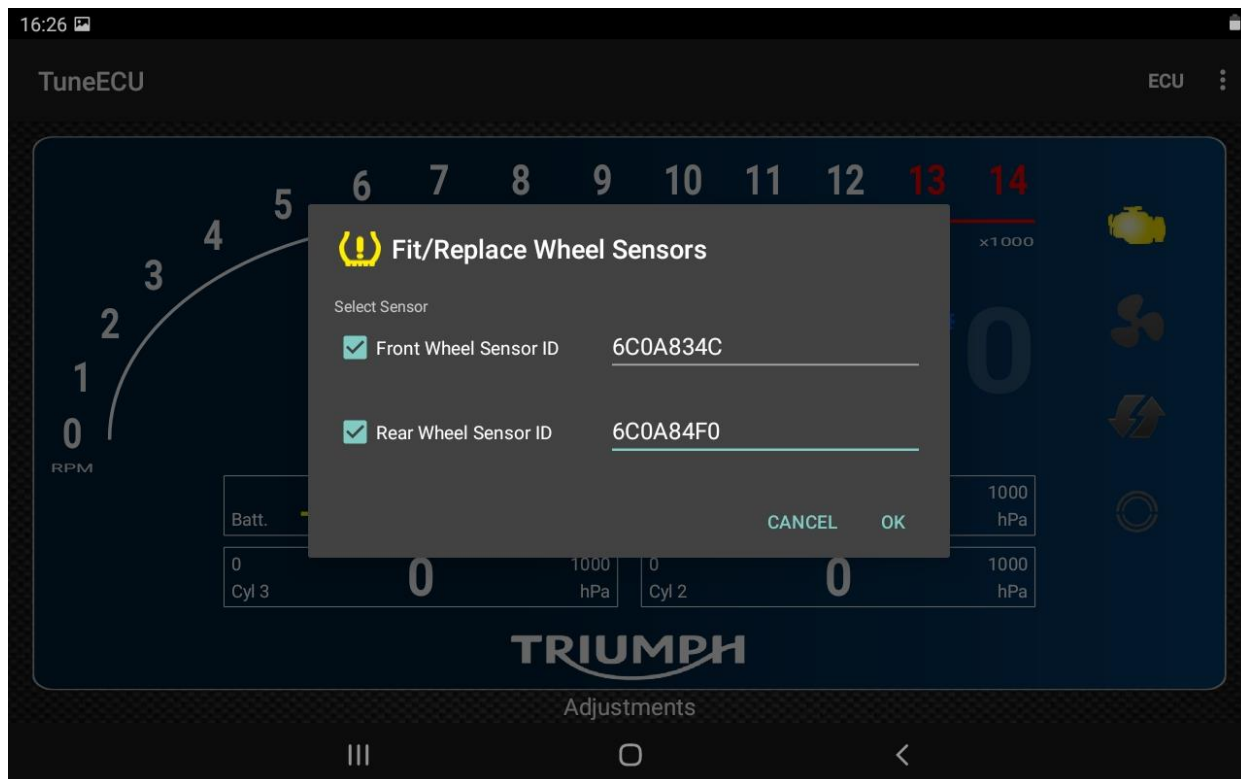


After a few seconds you have the TPMS panel, check « Enable » and choose the pressure unit (Bar or PSI)

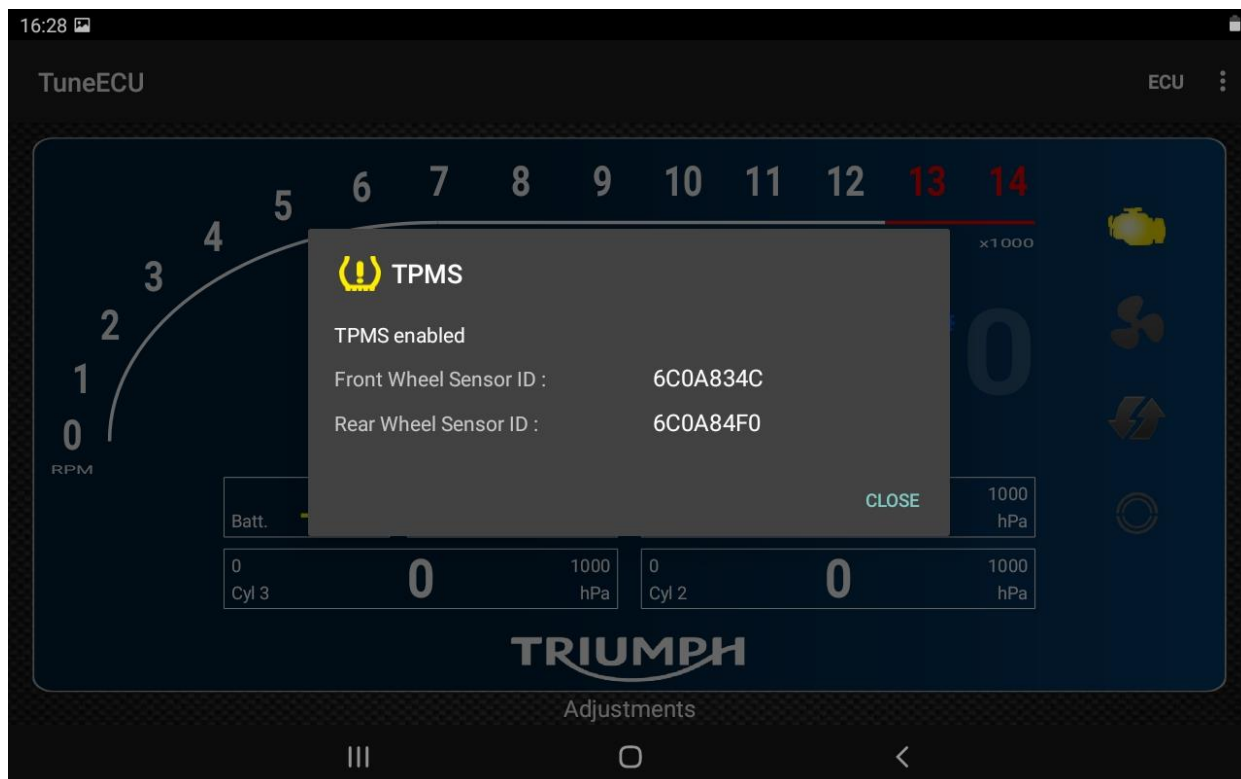


Select « WHEEL SENSORS »

Enter the front and rear sensor ID (it is written on the sensors) and valid



The TPMS sensors are now registered, the data will be displayed on the bike dashboard or TuneECU TPMS screen when the motorcycle starts riding.



The ID on the TPMS sensor (here 0C271FC1)



Be careful to identify the front and rear sensors before mounting them in the wheel.